

martin-thornton.com
01484 508000



23 Maplin Avenue, Salendine Nook Huddersfield, Yorkshire

Offers over £300,000

BEST AND FINAL OFFERS ARE INVITED ON THIS PROPERTY BY 12 NOON MONDAY 16th FEBRUARY.

Open to view dates:

Sunday 11th January: 3pm - 3.45pm, Wednesday 14th January: 4pm - 4.45pm

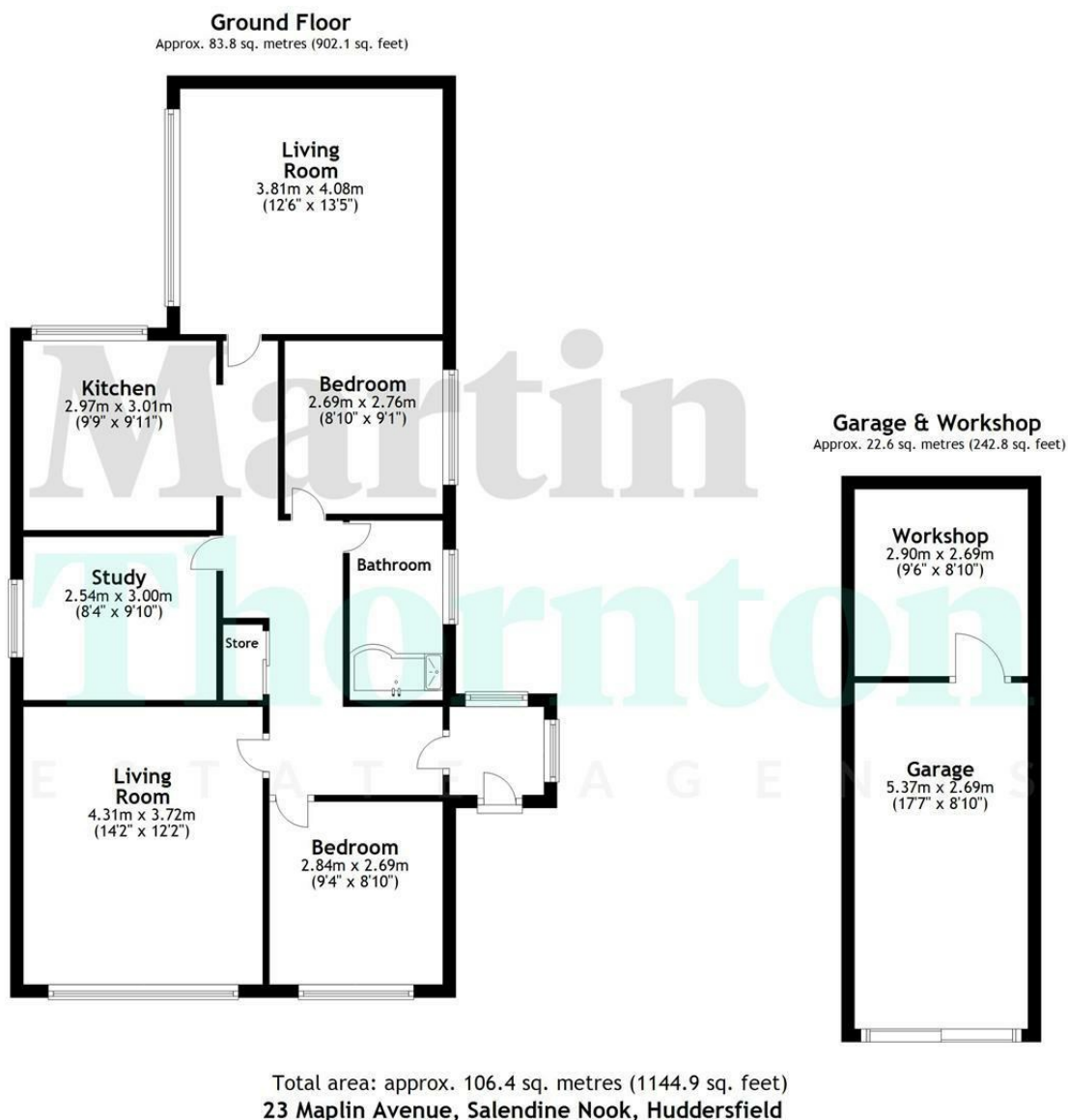
Monday 19th January: 9.15am - 10am, Wednesday 28th January: 10am - 10.45am

Monday 2nd February: 4pm - 4.45pm, Sunday 15th February: 10am - 10.45am

This three-bedroom detached bungalow occupies a corner plot position with gardens to all sides and is conveniently located for amenities within the Salendine Nook Shopping Centre. The accommodation comprises an entrance porch, hallway, good-sized living room, kitchen and separate dining/sitting room/bedroom four. On the first floor, there are three bedrooms and a bathroom. The interior requires a certain amount of cosmetic rejuvenation, but offers great potential to redesign and upgrade if deemed necessary. The property benefits from gas-fired central heating, uPVC double-glazing and a security system. Externally, the property has a driveway with parking for two cars and an attached extended garage with integral workshop. There is a patio area as well as lawned gardens to all sides and two useful timber sheds. The property is offered with the advantage of vacant possession.

23 Maplin Avenue, Salendine Nook Huddersfield, Yorkshire

Floorplan



23 Maplin Avenue, Salendine Nook Huddersfield, Yorkshire

Details

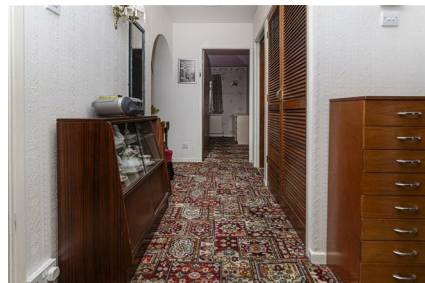


Entrance Porch

An external uPVC door with glazed panels gives access into the entrance porch, which has uPVC windows overlooking the side garden. From here, a timber door leads into the hallway.

Hallway

The L-shaped hallway has a useful storage cupboard, and a hanging rail. The hallway has a light point, access to loft space and a radiator. A door leads into the living room.



Living Room

This good-sized reception room is positioned at the front of the property, with a bank of uPVC windows overlooking the frontage. It has plenty of space for furniture, coving to the ceiling and a radiator.



Rear Lobby

The lobby has a wide archway on the left-hand side leading to the kitchen.

Kitchen

The kitchen has wall cupboards and base units with working surfaces and a one-and-a-half bowl sink with a mixer tap. There is space for a freestanding cooker, dishwasher and a further freestanding appliance, along with plumbing for an automatic washing machine. The boiler for the central heating system is housed in this area. There is a rear uPVC window. From here, a door leads into a dining/sitting room.



Dining/Sitting Room

This multipurpose room is an extension to the original design and could be used as an additional bedroom or a formal dining/sitting room, etc. It is particularly light and bright with a large uPVC window, with views towards the National Park and Scapegoat Hill. There is plenty of space for furniture, a gas fire on a raised hearth, coving to the ceiling and two radiators.



23 Maplin Avenue, Salendine Nook Huddersfield, Yorkshire

Details



Bedroom One

This double bedroom is positioned at the front of the property and has a large built-in wardrobe with mirrors. The room has plenty of space for further furniture, a uPVC window and a radiator.



Bedroom Two

This good-sized bedroom has a large built-in wardrobe and space for further furniture. It has a uPVC window to the side elevation and a radiator.



Bedroom Three/Study

This single room has been utilised as a study/hobby space at present but was previously used as a double bedroom. It has a side uPVC window with long distance views towards Scape Goat Hill, space for furniture and a radiator.



Bathroom

The bathroom has a white three-piece suite comprising a P-shaped bath with a curved shower screen and a wall-mounted shower over, a pedestal wash hand basin and a low-level WC. There is tiling to the walls and floor, an opaque side uPVC window, a wall-mounted toiletries cabinet and an upright ladder style radiator.



23 Maplin Avenue, Salendine Nook Huddersfield, Yorkshire

Details



External Details

The property occupies a corner plot position and has a block paved driveway to the front and an additional parking area to the side. The driveway leads to the attached garage. There is a lawn and steps up to a paved pathway, along with a lawn on the right-hand side with external lighting and an external water point. At the rear, there is a paved garden with walling and fencing, a large timber shed, a lockable timber gate and steps leading down to a further lawned area. There is a timber shed to the rear of the attached garage.



Tenure

The vendor informs us that the property is freehold.

**23 Maplin Avenue, Salendine Nook
Huddersfield, Yorkshire**

Extra Images



23 Maplin Avenue, Salendine Nook Huddersfield, Yorkshire

Directions

